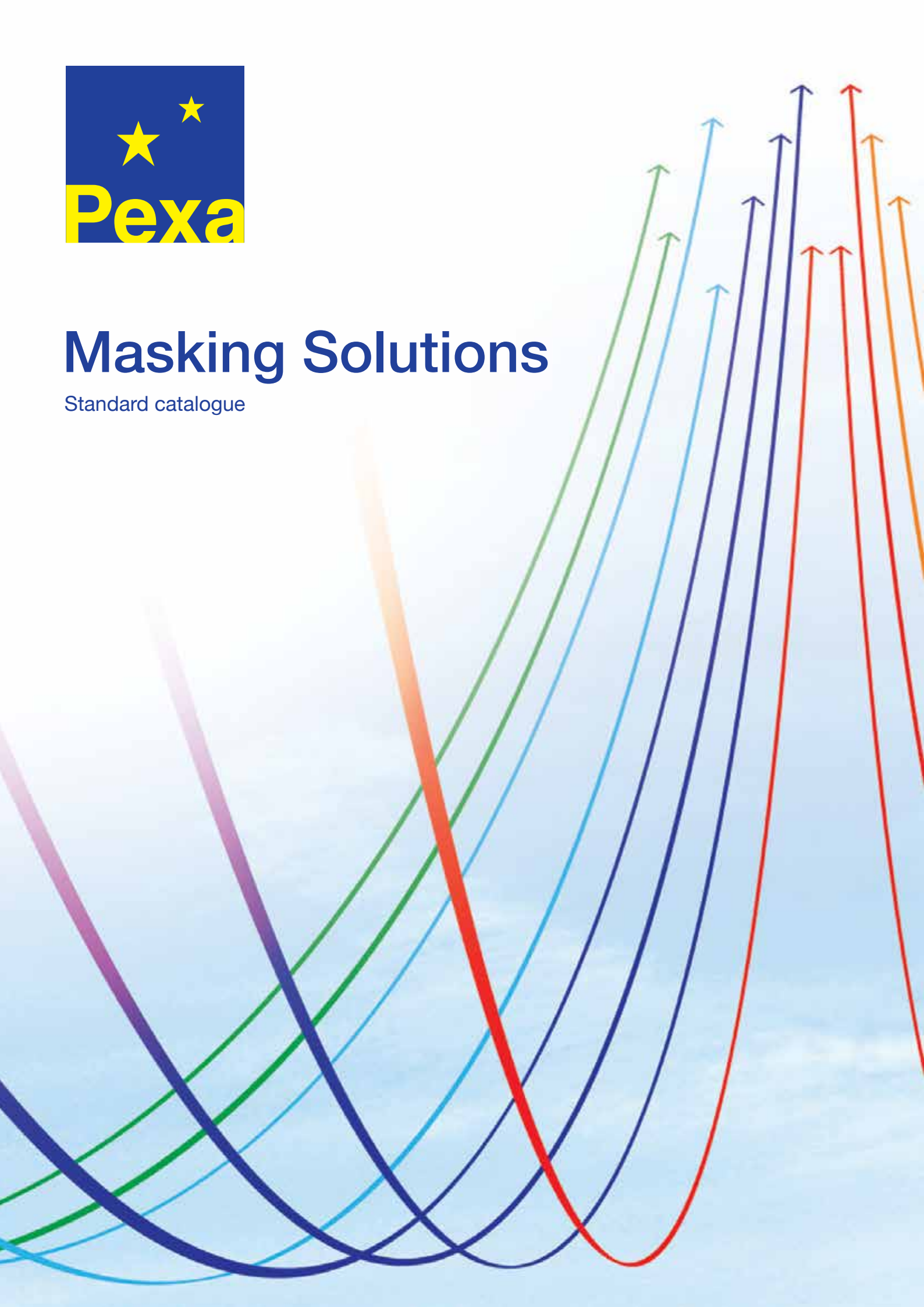




Masking Solutions

Standard catalogue



Pexa is a supplier of high technology materials to the aerospace, defence, energy and electronics industries. We are trusted partners of brand leading industrial product manufacturers; we employ progressive supply chain systems to deliver our promises.



Our mission is to assist our customers to meet their own business objectives using our products and services; these products include surface finishing materials, aircraft maintenance products, application equipment and unique packaging solutions.

Pexa is not just a distributor of high tech materials. We work in close partnership with materials manufacturers, to ensure that we offer a comprehensive support package for the selection and use of all the products that we supply.

Not only for the best technical outcome but also for optimal economy and value for money. We manage inventory and maintain the capability to remodel and package materials in line with individual end use requirements.

We are flexible and aim to enable our customers to meet their own business objectives. Our staff are experienced and trained in aerospace and defence industry practices and our quality management and traceability systems meet the most stringent requirements of the industry.

All products are approved for aerospace application and carry the appropriate certification. We understand environmental, health/safety and regulatory compliance issues and can help customers to achieve and exceed requirements using the products we supply.



Silicone Caps

4  Caps SC	8  Washer Caps SFC	8  Rectangle Caps SRC	9  Easy Caps SCE
--	--	--	--

Silicone Plugs


Push

10  Tapered Plug STP	12  Hollow Tapered Plug HSTS	13  Handle Conical Plug UP	13  Silicone Multi Size Plug MSP	14  Washer Plug UW	14  Step Plug SP
15  Double Plug DSTS	15  Hollow Thread Metric Plug HTM	16  Thread Mask Plug TMP	17  Flangeless Plug UFP	18  Flange Plug SFP	18  Hollow Cone Plug UHCP
19  Hollow Cone Washer Plug HWP					




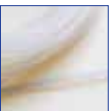


Pull

19  Stick Plug MT	20  Pull Plug SPP	22  Weld-Nut Pull Plug WP	22  Double Flange Pull Plug DFPP	24  Leading Pull Plug LT200	24  Washer Pull Plug UWPP
---	---	--	---	---	---

Tapes & Discs

25  Green Polyester Tape 218 GPT	25  Green Polyester Tape 204 PT204	26  Blue Polyester Tape BPT	26  Polyimide Tape KPT	27  Glass Cloth Tape GLT	27  Green Polyester Discs GPD
27  Crepe Paper Discs CD	28  Lead Foil Discs LFD	28  Lead Foil Tape LFT			

Tubes & Sheets

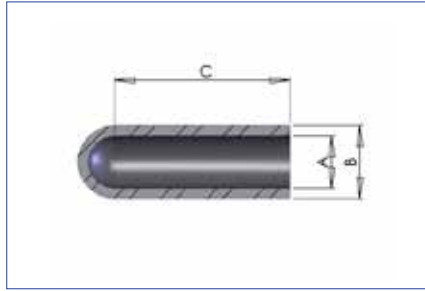
29  Silicone Tube ST	30  Silicone Star Tube SST	31  Silicone Foam Cord FOAMC	31  Silicone Solid Cord SCORD	32  Square Silicone Profile FSP	32  Silicone Sheet SS
--	--	--	--	--	---

Silicone Caps

315°

To mask studs and bolts.
Powder Coating, Plating, E-Coating,
Anodizing. Reusable.

1/4



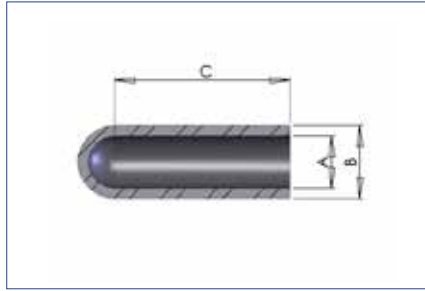
Part number	Color	Metric	A (mm)	B (mm)	C (mm)	Units/bag
SC-0020-0250	Clear	-	0,5	2,5	6,4	1.000
SC-0020-0500	Clear	-	0,5	2,5	12,7	1.000
SC-0037-0500	Clear	-	0,9	2,5	12,7	1.000
SC-0040-0750	Clear	-	1,0	4,1	19,1	1.000
SC-0062-0250	Clear	-	1,6	4,6	6,4	1.000
SC-0062-0750	Clear	-	1,6	4,6	19,1	1.000
SC-0062-1000	Clear	-	1,6	4,7	25,4	1.000
SC-0070-0250	Clear	-	1,8	4,9	6,4	1.000
SC-0070-1000	Clear	-	1,8	4,8	25,4	1.000
SC-0093-0250	Clear	-	2,4	5,4	6,4	1.000
SC-0093-0500	Clear	-	2,4	5,0	12,7	1.000
SC-0093-0750	Pink	-	2,4	5,4	19,1	1.000
SC-0093-1000	Clear	-	2,4	5,4	25,4	1.000
SC-0100-0500	Dark blue	M3	2,5	5,6	12,7	1.000
SC-0100-1000	Light green	M3	2,5	5,6	25,4	1.000
SC-0100-1500	Clear	M3	2,5	5,6	38,1	1.000
SC-0109-0500	Yellow	M3	2,8	5,8	12,7	1.000
SC-0109-0750	Grey	M3	2,8	5,8	19,1	1.000
SC-0109-1000	White	M3	2,8	5,8	25,4	1.000
SC-0125-0500	Light blue	-	3,2	6,2	12,7	1.000
SC-0125-1000	Black	-	3,2	6,2	25,4	1.000
SC-0137-0500	Clear	-	3,5	6,5	12,7	1.000
SC-0137-1000	Clear	-	3,5	6,5	25,4	1.000
SC-0140-0500	Clear	M4	3,6	6,7	12,7	1.000
SC-0140-1000	Clear	M4	3,6	6,7	25,4	1.000
SC-0148-0750	Clear	M4	3,8	6,1	19,1	1.000
SC-0148-1000	Pink	M4	3,8	6,8	25,4	1.000
SC-0156-0500	Light green	-	4,0	7,0	12,7	1.000
SC-0156-1000	Yellow	-	4,0	7,0	25,4	1.000
SC-0164-1000	Clear	-	4,2	7,4	25,4	1.000
SC-0172-0500	Clear	-	4,4	7,4	12,7	1.000
SC-0172-1000	Clear	-	4,4	7,4	25,4	1.000
SC-0172-1500	Clear	-	4,4	7,4	38,1	1.000
SC-0180-1000	Black	M5	4,6	7,1	25,4	1.000
SC-0187-0500	White	M5	4,7	7,8	12,7	1.000

Silicone Caps

315°

To mask studs and bolts.
Powder Coating, Plating, E-Coating,
Anodizing. Reusable.

2/4



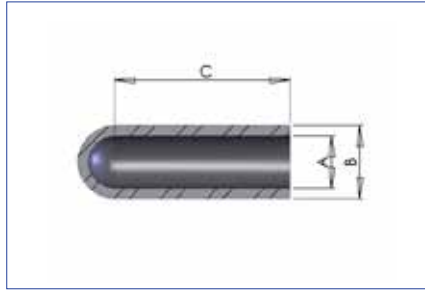
Part number	Color	Metric	A (mm)	B (mm)	C (mm)	Units/bag
SC-0187-1000	Clear	M5	4,7	7,8	25,4	1.000
SC-0187-1500	Dark green	M5	4,7	7,8	38,1	500
SC-0218-1000	Yellow	M6	5,5	8,6	25,4	1.000
SC-0223-0500	Dark blue	M6	5,7	8,7	12,7	1.000
SC-0223-0750	Clear	M6	5,7	8,7	19,1	1.000
SC-0223-1000	Black	M6	5,7	8,7	25,4	1.000
SC-0223-1500	Pink	M6	5,7	8,7	38,1	500
SC-0234-0500	Clear	M6	5,9	9,1	12,7	500
SC-0234-0750	Clear	M6	5,9	9,0	19,1	500
SC-0234-0787	Dark green	M6	5,9	9,0	20,0	500
SC-0234-1000	Light green	M6	5,9	9,0	25,4	500
SC-0234-1500	Yellow	M6	5,9	9,0	38,1	500
SC-0250-0500	Clear	-	6,4	9,7	12,7	500
SC-0250-1000	Grey	-	6,4	9,4	25,4	500
SC-0250-1500	Clear	-	6,4	9,4	38,1	500
SC-0281-0500	Yellow	-	7,1	10,2	12,7	500
SC-0281-1000	Light blue	-	7,1	10,2	25,4	500
SC-0295-0500	Clear	M8	7,5	10,7	12,7	500
SC-0295-0750	Black	M8	7,5	10,7	19,1	500
SC-0295-1000	Light green	M8	7,5	10,7	25,4	500
SC-0295-1500	Clear	M8	7,5	10,5	38,1	500
SC-0312-1000	White	M8	7,9	11,0	25,4	500
SC-0312-1500	Pink	M8	7,9	11,0	38,1	500
SC-0340-0500	Clear	-	8,6	11,7	12,7	500
SC-0340-1000	Black	-	8,6	11,7	25,4	500
SC-0343-1000	Clear	-	8,7	11,8	25,4	500
SC-0355-0590	Clear	-	9,0	12,1	15,0	500
SC-0355-1500	Light green	-	9,0	12,1	38,1	500
SC-0375-0500	Pink	M10	9,5	12,8	12,7	500
SC-0375-0750	Dark blue	M10	9,5	12,8	19,1	500
SC-0375-1000	Yellow	M10	9,5	12,6	25,4	500
SC-0375-1500	Grey	M10	9,5	12,8	38,1	500
SC-0406-1000	Light blue	-	10,3	13,4	25,4	500
SC-0437-1000	Black	-	11,1	14,1	25,4	500
SC-0456-1000	Pink	M12	11,6	14,6	25,4	500

Silicone Caps

315°

3/4

To mask studs and bolts.
Powder Coating, Plating, E-Coating,
Anodizing. Reusable.



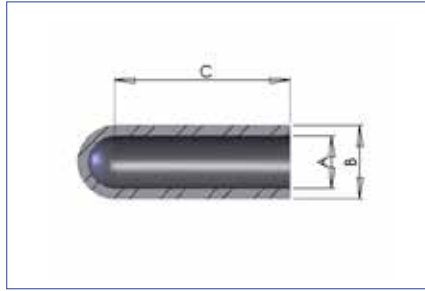
Part number	Color	Metric	A (mm)	B (mm)	C (mm)	Units/bag
SC-0456-1500	Clear	M12	11,6	14,6	38,1	500
SC-0468-1000	White	M12	11,9	14,9	25,4	500
SC-0468-1500	Clear	M12	11,9	14,9	38,1	500
SC-0480-1500	Clear	-	12,2	15,2	38,1	500
SC-0500-1500	Light green	-	12,7	15,7	38,1	500
SC-0500-1750	Clear	-	12,7	15,7	44,5	250
SC-0500-2025	Clear	-	12,7	15,7	57,2	250
SC-0500-4000	Clear	-	12,7	15,7	101,6	250
SC-0535-1000	Clear	M14	13,6	16,6	25,4	250
SC-0535-1500	Yellow	M14	13,6	16,6	38,1	250
SC-0535-3000	Grey	M14	13,6	16,6	76,2	250
SC-0562-1500	Light blue	-	14,3	17,3	38,1	250
SC-0600-1500	Clear	M16	15,2	18,3	38,1	250
SC-0625-1250	Clear	M16	15,9	18,9	31,8	250
SC-0625-1500	Clear	M16	15,9	18,9	38,1	250
SC-0625-2500	White	M16	15,9	18,9	63,5	250
SC-0687-1500	Pink	M18	17,4	20,5	38,1	250
SC-0687-1750	Clear	M18	17,4	20,5	44,5	250
SC-0730-1500	Light green	-	18,5	21,6	38,1	250
SC-0730-4325	Clear	-	18,5	21,6	109,9	250
SC-0750-1500	Yellow	M20	19,1	22,1	38,1	250
SC-0750-2000	Clear	M20	19,1	22,1	50,8	250
SC-0750-3500	Clear	M20	19,1	22,1	88,9	250
SC-0780-1500	Blue	M20	19,8	23,0	38,1	250
SC-0812-1500	Black	M22	20,6	23,7	38,1	250
SC-0812-1750	Clear	M22	20,6	23,7	44,5	250
SC-0875-0675	Clear	-	22,2	25,3	17,1	250
SC-0875-1500	Clear	-	22,2	25,3	38,1	250
SC-0875-3000	Clear	-	22,2	25,3	76,2	250
SC-0937-1500	White	M24	23,8	26,8	38,1	250
SC-0970-1500	Pink	-	24,6	27,8	38,1	250
SC-0970-4000	Clear	-	24,6	27,7	101,6	250
SC-1000-1500	Light green	M26	25,4	28,4	38,1	250
SC-1000-2000	Yellow	M26	25,4	28,4	50,8	250
SC-1062-1500	Clear	M28	27,0	30,0	38,1	250

Silicone Caps

315°

4/4

To mask studs and bolts.
Powder Coating, Plating, E-Coating,
Anodizing. Reusable.



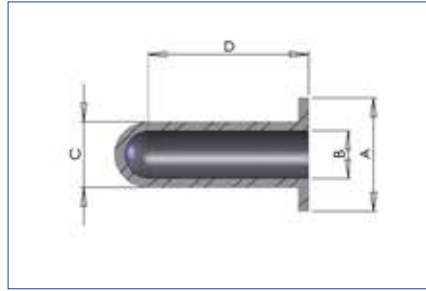
Part number	Color	Metric	A (mm)	B (mm)	C (mm)	Units/bag
SC-1062-2000	Pink	M28	27,0	30,1	50,8	100
SC-1062-3000	Clear	M28	27,0	30,0	76,2	100
SC-1125-1500	Light blue	M30	28,6	31,6	38,1	100
SC-1125-4500	Clear	M30	28,6	31,6	114,3	100
SC-1187-1500	Black	M32	30,1	33,2	38,1	100
SC-1250-1500	Clear	M32	31,8	34,8	38,1	100
SC-1350-1500	Clear	M36	34,3	37,3	38,1	100
SC-1375-1500	Green	-	34,9	38,0	38,1	100
SC-1500-1000	Clear	M40	38,1	41,3	25,4	100
SC-1500-1500	Clear	M40	38,1	41,1	38,1	100
SC-1500-1750	Light green	M40	38,1	41,3	44,5	100
SC-1625-1500	Clear	-	41,3	44,3	38,1	100
SC-1625-2000	Clear	-	41,3	44,3	50,8	100
SC-1750-1500	Clear	-	44,5	47,5	38,1	100
SC-1750-2000	Yellow	-	44,5	47,6	50,8	100
SC-1750-2500	Clear	-	44,5	47,5	63,5	100
SC-1875-1500	Clear	M50	47,6	50,7	38,1	100
SC-1875-2000	Clear	M50	47,6	50,8	50,8	100
SC-2000-2000	Light blue	-	50,8	53,8	50,8	100
SC-2500-1500	Clear	-	63,5	66,5	38,1	100
SC-2750-1500*	Clear	-	69,9	72,9	38,1	100
SC-3500-1500	Clear	-	88,9	91,9	38,1	100
SC-3500-3000	Clear	-	88,9	91,9	76,2	100
SC-4000-1750	Clear	-	101,6	104,6	44,5	100

* Flat cap instead of rounded.

Silicone Washer Caps

315°

To mask studs and holes with the surrounding zone to protect. Powder Coating, E-Coating, Multi use design. Reusable.

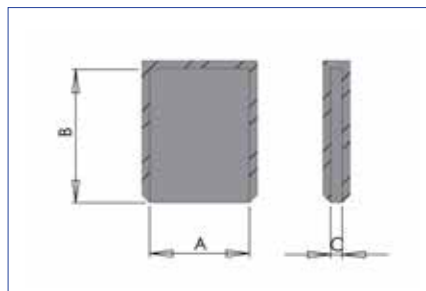


Part number	Color	Metric	A (mm)	B (mm)	C (mm)	D (mm)	Units/bag
SFC-0106-1000	Light green	M3	12,0	2,7	6,2	25,4	500
SFC-0125-1000	Clear	-	12,7	3,2	6,6	25,4	500
SFC-0146-1000	Pink	M4	12,0	3,7	6,7	25,4	500
SFC-0156-1000	Red	M4	12,7	4,0	8,1	25,4	500
SFC-0172-1000	Clear	-	12,7	4,4	9,8	25,4	500
SFC-0181-1000	Clear	M5	15,0	4,6	8,2	25,4	500
SFC-0220-1000	Red	M6	15,0	5,6	8,7	25,4	500
SFC-0295-1000	Black	M8	18,0	7,5	10,7	25,4	250
SFC-0374-1500	Yellow	M10	20,8	9,5	12,7	38,1	250
SFC-0453-1500	Clear	M12	25,0	11,5	16,7	38,1	250
SFC-0610-1500	Purple	M16	31,0	15,5	20,7	38,1	250
SFC-0768-1500	Grey	M20	38,0	19,5	24,7	38,1	250

Silicone Rectangle Cover

315°

Powder Coating, E-Coating, plating, anodizing, electronic industry. Reusable.

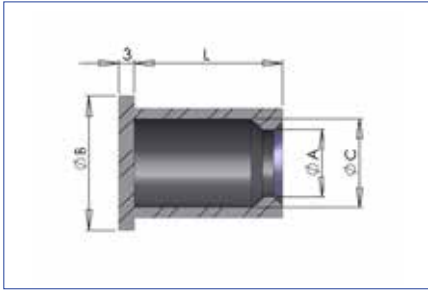


Part number	Color	A (mm)	B (mm)	C (mm)	Units/bag
SRC-1	Clear	6,3	10,0	0,8	1.000
SRC-2	Rusty red	6,3	11,6	0,8	1.000
SRC-5	Pink	12,5	17,5	1,2	1.000
REC0460	Clear	11,7	7,1	0,9	1.000
REC0470	Clear	11,9	9,5	1,0	1.000

Silicone Easy Cap

315°

Powder Coating, E-Coating.
Easy to put and remove. Suitable
for 2 diameter studs. Reusable.



Part number	Color	A (mm)	B (mm)	C (mm)	L (mm)	Units/bag
SCE-112-1180	Clear	2,8	16,2	6,0	30,0	500
SCE-156-2000	Clear	4,0	17,3	7,1	50,8	500
SCE-157-1180	Clear	4,0	17,3	7,2	30,0	500
SCE-180-2000	Clear	4,6	17,9	7,8	50,8	500
SCE-234-2000	Clear	5,9	19,3	9,1	50,8	500
SCE-355-1500	Clear	9,0	22,4	12,2	38,1	500
SCE-375-1421	Clear	9,5	22,9	12,7	36,1	500
SCE-394-1180	Clear	10,0	23,3	13,2	30,0	500
SCE-438-950	Clear	11,1	24,5	14,3	24,1	500
SCE-485-1600	Clear	12,3	26,3	16,1	40,6	250
SCE-531-1180	Clear	13,5	26,8	16,7	30,0	250
SCE-687-1180	Clear	17,5	30,8	20,6	30,0	100
SCE-689-3579	Clear	17,5	30,8	20,7	90,9	100
SCE-725-3120	Clear	18,4	31,5	21,2	85,1	100
SCE-1125-5000	Clear	28,6	41,9	31,8	127,0	50

* Ask for more dimensions.

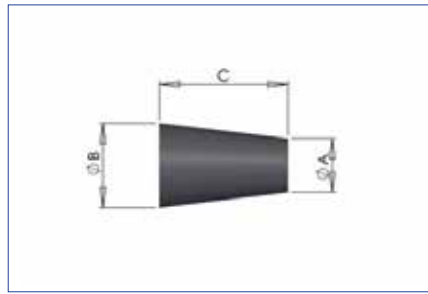
Silicone Tapered Plug

315°

1/2



Powder Coating, E-Coating, anodizing and plating. To mask holes suitable in different diameters. Reusable.



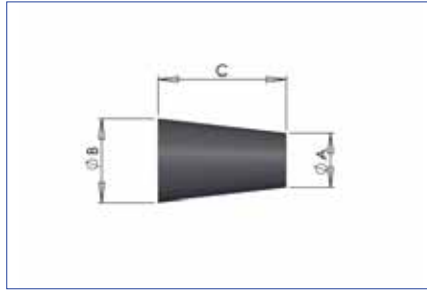
Part number	Color	Metric	A (mm)	B (mm)	C (mm)	Units/bag	Hole (mm)
STP-0099-1000	Clear	–	0,8	2,5	25,4	1.000	0,5-1
STP-0099-0625	Clear	M3	0,8	3,2	15,9	1.000	1-2
STP-0100-0625	Pink	M3	1,6	3,2	15,9	1.000	1-3
STP-0187-0625	Clear	M3-M4	1,6	4,8	15,9	1.000	2-3
STP-0187-0750	Rusty	M3-M4	1,6	4,8	19,1	1.000	2-4
STP-0197-1100	Green	M3-M5	1,0	5,0	27,9	1.000	1,5-4
STP-0101-0500	Yellow	M3-M5	1,6	5,1	12,7	1.000	2-4
STP-0101-0625	Grey	M3-M5	1,6	5,1	15,9	1.000	2-4
STP-0101-0750	Clear	M3-M5	1,6	5,1	19,1	1.000	2-4
STP-0102-0750	Green	M4-M6	3,2	6,4	19,1	1.000	4-6
STP-0102-1000	Clear	M4-M6	3,2	6,4	25,4	1.000	4-6
STP-0103-0625	Blue	M6-M8	4,8	8,7	15,9	1.000	5-8
STP-0103-1000	Clear	M6-M8	4,8	8,7	25,4	1.000	5-8
STP-0104-0500	White	M8-M10	6,4	9,5	12,7	1.000	7-9
STP-0104-0750	Rusty	M8-M10	6,4	9,5	19,1	500	7-8
STP-104L	White	M8-M10	6,4	9,5	25,4	500	7-9
STP-104XL	Yellow	M4-M10	3,2	9,5	31,8	500	4-9
STP-0394-1890	Clear	M8-M10	5,0	10,0	48,0	500	6-9
STP-0104-1000	Clear	M8-M10	6,4	11,1	25,4	500	7-10
STP-0438-688	Clear	M12	8,8	11,1	17,5	500	10-11
STP-0105-0750	Light blue	M10-M12	7,6	12,7	19,1	500	9-11
STP-0105-0813	Clear	M10-M12	8,0	12,7	20,7	500	9-11
STP-0105-1000	Dark green	M10-M12	7,9	12,7	25,4	500	9-11
STP-0105-2000	Clear	M5-M12	3,2	12,7	50,8	250	4-11
STP-0562-1125	Clear	M12-M14	8,0	14,3	28,6	250	9-13,5
STP-0563-1000	Grey	M14	9,5	14,3	25,4	500	10-13,5
STP-0106-1000	Clear	–	10,3	15,1	25,4	500	11-14
STP-0625-0813	Clear	M16	11,1	15,9	20,6	500	13-15
STP-0107-1000	Clear	–	12,7	16,7	25,4	500	13-16
STP-0108-1000	Clear	M20	14,3	19,1	25,4	200	15-18,5
STP-0109-1000	Clear	–	15,9	19,8	25,4	200	17-19
STP-010-1000	Clear	–	18,3	23,8	25,4	200	19-23
STP-011-1000	Clear	–	19,0	25,4	25,4	200	20-24,5
STP-1024-1000	Clear	–	20,0	26,0	25,4	200	23-25
STP-012-1000	Clear	–	23,0	27,0	25,4	200	24-26

Silicone Tapered Plug

315°

2/2

Powder Coating, E-Coating, anodizing and plating. To mask holes suitable in different diameters. Reusable.

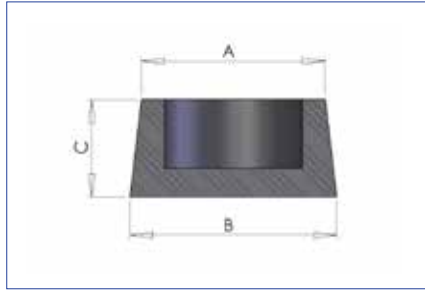


Part number	Color	Metric	A (mm)	B (mm)	C (mm)	Units/bag	Hole (mm)
STP-013-1000	Clear	-	24,4	27,7	25,4	200	25-29
STP-014-1000	Clear	-	26,2	31,8	25,4	100	27-30,5
STP-015-1000	Clear	-	27,0	34,1	25,4	100	28-33
STP-016-1000	Clear	-	28,6	36,5	25,4	100	30-35
STP-017-1000	Clear	-	30,2	38,1	25,4	100	32-37
STP-018-1000	Clear	-	33,4	41,3	25,4	10	35-40
STP-019-1000	Clear	-	35,7	42,9	25,4	10	37-42
STP-0120-1000	Clear	-	37,3	44,5	25,4	10	39-43
STP-0121-1000	Clear	-	38,1	46,0	25,4	10	40-45
STP-0122-1000	Clear	-	41,3	50,0	25,4	10	42-49
STP-0123-1000	Clear	-	44,5	52,8	25,4	10	45,5-51,5
STP-0124-1000	Clear	-	47,6	56,0	25,4	10	50-54
STP-0125-1000	Clear	-	50,8	62,7	25,4	10	52-61
STP-0126-1000	Clear	-	54,0	63,5	25,4	10	55-62
STP-0127-1000	Clear	-	57,9	68,3	25,4	10	59-67
STP-2953-1375	Clear	-	61,9	75,0	34,9	10	63-74
STP-0128-1400	Clear	-	61,9	75,4	35,6	10	65-75
STP-0129-1500	Clear	-	76,2	88,9	38,1	5	78-88
STP-0130-1500	Clear	-	82,6	101,6	38,1	5	87-100
STP-0131-2000	Clear	-	88,9	127,0	50,8	5	95-126

Silicone Hollow Tapered Plug

315°

Powder Coating, E-Coating, anodizing and plating. Multiple uses for holes and for studs. Lighter and cheaper than the solid conical plugs. Reusable.

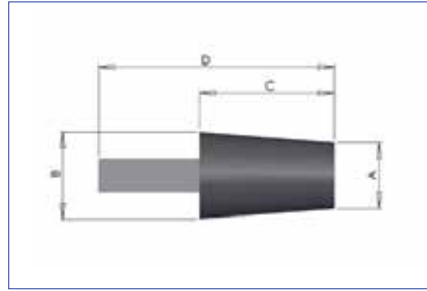


Part number	Color	Hole (mm)	A (mm)	B (mm)	C (mm)	Units/bag
HSTS1063	White	24-26	23,0	27	25,4	100
HSTS1102	Rusty	25-27	24,0	28	25,4	100
HSTS1260	Yellow	27-31	26,0	32	25,4	100
HSTS1338	Brown	28-33	27,0	34	25,4	100
HSTS1456	Blue	31-36	30,0	37	25,4	50
HSTS1535	Black	32-38	31,0	39	25,4	50
HSTS1614	Red	34-40	33,0	41	25,4	50
HSTS1693	Clear	37-42	36,0	43	25,4	25
HSTS1772	Pink	38-44	37,0	45	25,4	25
HSTS1810	Dark green	39-45	38,0	46	25,4	25
HSTS1968	Rusty	44-48	42,0	50	25,4	25
HSTS2086	Clear	47-51	45,0	53	25,4	25
HSTS2205	Yellow	50-54	48,0	56	25,4	25
HSTS2469	Dark green	53-60	50,0	62,7	25,4	25
HSTS2520	Blue	58-62	54,0	64	25,4	10
HSTS2688	Clear	60-66	58,0	68	25,4	10
HSTS2953	Red	65-73	62,0	75	25,4	10
HSTS3228-1500	Light green	70-80	68,0	82	38,1	10
HSTS3500-1500	White	77-87	76,0	89	38,1	10
HSTS3543	Clear	77-87	75,0	90	25,4	10
HSTS3543-1535	Clear	77-87	75,0	90	39,0	10
HSTS4000-1500	Rusty	88-99	82,5	101	38,1	10
HSTS4055-1535	Clear	90-100	83,0	103	39,0	10

Silicone Handle Conical Plug

315°

Powder Coating, E-Coating, anodizing and plating. To mask holes. Easy to put and remove. Reusable.

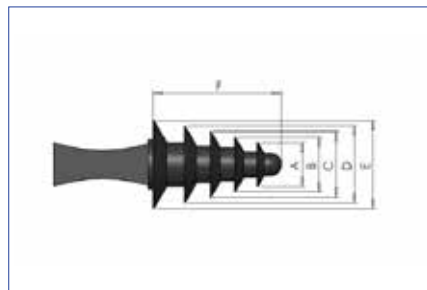


Part number	Color	Metric	A (mm)	B (mm)	C (mm)	D (mm)	Units/bag
UP99-H	Clear	-	0,8	3,2	15,9	25,4	1.000
UP100-H	Light green	M3	1,6	3,2	15,9	25,4	1.000
UP101-H	Pink	-	1,6	4,8	15,9	28,7	1.000
UP102-H	Black	M4-M6	3,2	6,6	19,1	31,8	1.000
UP103-H	Red	M6-M8	4,8	8,7	15,9	28,7	500
UP104-H	Yellow	M8-M10	6,4	11,1	19,1	31,8	500
UP105-H	White	M8-M10	6,4	9,5	12,7	25,4	500
UP00-H	Purple	M12-M14	10,3	15,2	25,4	44,5	250
UP108-H	Light green	M14-M16	11,1	15,9	22,2	41,3	250
UP0-H	Pink	M16	12,7	16,7	25,4	44,5	250
UP2-H	Red	M18-M20	15,9	19,8	25,4	44,5	250
UP3-H	Yellow	M22	18,3	23,8	25,4	44,5	100
UP4-H	Clear	M24	19,1	25,4	25,4	44,5	100

Silicone Multi Size Plug

315°

Powder Coating, E-Coating, to mask multiple sizes of holes with the same plug. Easy to put and remove.



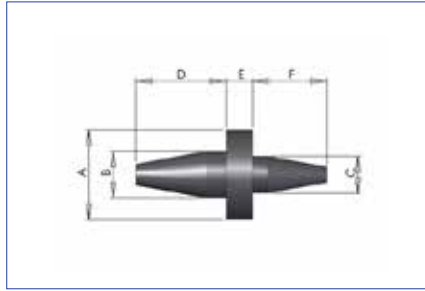
Part number	Color	A (mm)	B (mm)	C (mm)	D (mm)	E (mm)	F (mm)	Units/bag
MSP-1	Blue	4	6	8	10	12	17,5	250
MSP-2	Red	8	10	12	14	16	30	100
MSP-3	Green	10	12	14	16	18	29,5	100

Silicone Washer Plug

315°



Powder Coating, E-Coating, anodizing and plating. To mask holes and surrounding parts. Each mask is suitable for two hole dimensions. Easy to put and remove. Reusable.



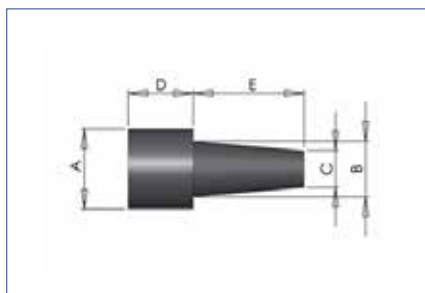
Part number	Color	A (mm)	B (mm)	C (mm)	D (mm)	E (mm)	F (mm)	Units/bag
UW380	Yellow	6,6	3,3	2,4	8,8	5,0	12,8	1.000
UW-M3	Dark green	7,0	3,7	2,8	5,6	5,0	7,4	1.000
UW400	Black	7,9	4,0	3,4	12,5	4,9	12,8	1.000
UW-M4	Pink	9,0	4,7	3,6	7,2	5,0	9,4	1.000
UW-M5	Clear	10,0	5,7	4,5	9,0	5,0	11,4	1.000
UW415	Light green	12,8	4,7	3,2	9,7	5,1	12,6	500
UW-M6	Red	12,5	6,7	5,3	10,6	5,0	13,4	500
UW-M8	Black	17,0	8,7	7,1	14,2	5,0	17,4	500
UW-M10	Yellow	21,0	10,7	9,6	19,2	5,0	21,4	250
UW-M12	Clear	24,0	12,7	10,9	21,8	5,0	25,4	250

Silicone Step Plug

315°



Powder Coating, E-Coating, anodizing and plating. To mask holes and surrounding parts. Reusable.

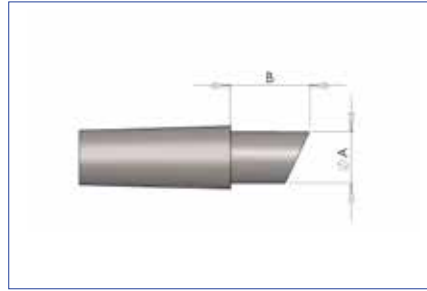
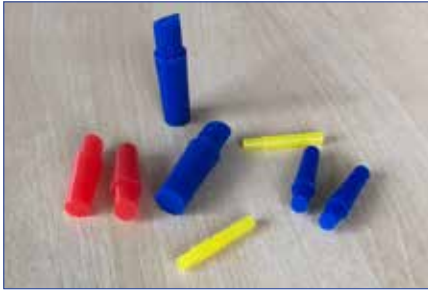


Part number	Color	A (mm)	B (mm)	C (mm)	D (mm)	E (mm)	Units/bag
SP-3	Light blue	7,0	3,0	2,4	7,0	13,0	500
SP-4	Light green	8,0	5,0	2,8	8,0	14,0	500
SP-5	Purple	9,0	6,0	3,9	9,0	16,0	500
SP-6	Black	10,2	6,4	4,8	10,2	16,8	250
SP-8	White	12,4	8,5	5,9	9,8	17,3	250

Silicone Double Plug

315°

Powder Coating, E-Coating, anodizing and plating. Metric plug to mask the first thread. Easy to put and remove. Reusable.



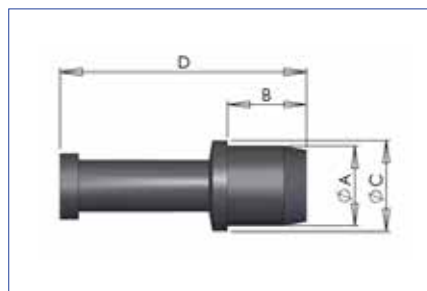
Part number	Color	Metric	Units/bag	Plug dia (mm)	Plug length (mm)
DSTS 025022	Blue	M3	1.000	2,5	7,6
DSTS 034043	Yellow	M4	1.000	3,4	6,5
DSTS 043052	Black	M5	1.000	4,3	7,4
DSTS 051072	Blue	M6	1.000	5,1	7,3
DSTS 069089	Red	M8	1.000	6,9	10,0
DSTS 069089-3S*	Orange	M8	1.000	6,9	10,0
DSTS 085105	Blue	M10	500	8,5	13,0
DSTS 103123	Grey	M12	250	10,5	14,5

* 3 steps plug.

Silicone Hollow Thread Metric Plug

315°

Powder Coating, E-Coating, anodizing and plating. To mask the screw and first thread. Reusable.

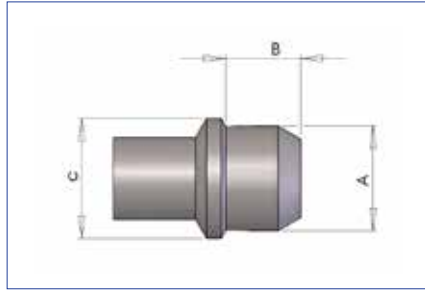


Part number	Color	A (mm)	B (mm)	C (mm)	D (mm)	Units/bag
HTM-M3	Pink	2,7	5,3	4,0	21,3	1.000
HTM-M4	White	3,4	5,6	5,0	21,6	1.000
HTM-M5	Black	4,4	5,6	6,0	21,6	1.000
HTM-M6	Dark blue	5,1	7,5	6,3	32,5	1.000
HTM-M8	Yellow	7,0	7,5	8,4	25,0	1.000
HTM-M10	Rusty red	8,7	9,2	10,4	27,2	1.000
HTM-M12	Red	10,4	10,5	12,4	33,5	1.000

Silicone Thread Mask Plug

315°

Powder Coating, E-Coating, anodizing and plating. To mask the screw and first thread. Reusable.

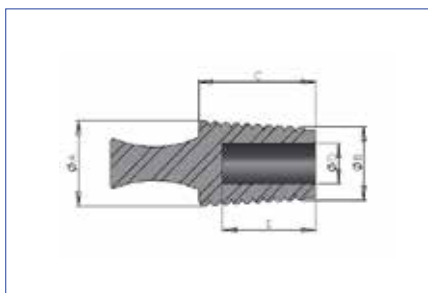


Part number	Color	Metric	A (mm)	B (mm)	C (mm)	Units/bag
TMP-0107	Clear	M3	2,7	5,3	3,5	1.000
TMP-0141	Clear	M4	3,6	5,8	4,1	1.000
TMP-0178	Clear	M5	4,5	5,6	5,3	1.000
TMP-0208	Clear	-	5,3	7,5	6,3	500
TMP-0210	Clear	-	5,3	5,1	6,4	500
TMP-0218	Clear	M6	5,5	5,1	6,6	500
TMP-0218L	Clear	-	5,5	7,1	6,6	500
TMP-0278	Clear	M8	7,1	5,1	8,1	500
TMP-0278L	Clear	-	7,1	7,1	8,1	500
TMP-0283	Clear	-	7,2	5,1	8,5	500
TMP-0336	Clear	-	8,5	6,4	9,8	500
TMP-0358	Clear	M10	9,1	6,1	10,4	500
TMP-0358L	Clear	-	9,1	7,0	10,4	250
TMP-0394	Clear	-	10,0	8,9	11,4	250
TMP-0426	Clear	M12	10,8	8,8	12,4	250
TMP-0451	Clear	-	11,5	8,9	13,0	250
TMP-0510	Clear	M14	13,0	7,6	14,0	250
TMP-0583	Clear	M16	14,8	10,4	16,5	100
TMP-0643	Clear	M18	16,3	9,5	18,6	100
TMP-0724	Clear	M20	18,4	13,0	20,6	100
TMP-0825	Clear	M22	21,0	9,5	23,2	100
TMP-0840	Clear	M24	21,3	13,6	23,9	100
TMP-0896	Clear	-	22,8	16,0	24,1	100
TMP-0965	Clear	M27	24,5	15,0	27,0	100
TMP-1063	Clear	M30	27,0	15,0	30,0	100

Silicone Flangeless Plug

315°

Powder Coating, E-Coating, anodizing and plating. To mask threaded holes including the first thread. Easy to put and remove. Reusable.



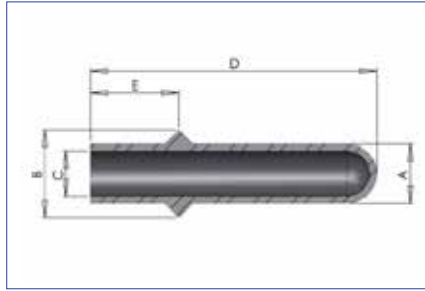
Part number	Color	Metric	A (mm)	B (mm)	C (mm)	D (mm)	E (mm)	Units/bag
UFP00080	Clear	M4	4,0	2,0	19,1	–	–	500
UFP00250	Clear	M5-M6	5,8	4,0	25,4	–	–	250
UFP00312	Black	M8	8,0	5,6	25,4	–	–	250
UFP00406	Yellow	M10	9,7	8,0	25,4	–	–	250
UFP00468	Clear	M12	11 ,9	9,7	25,4	–	–	250
UFP00562	Light blue	M14	14,6	12,2	25,4	4,8	17,9	250
UFP00625	Purple	M16	16,0	13,6	25,4	6,4	18,3	250
UFP00718	Rusty red	M18	18,0	16,0	25,4	8,2	20,2	250
UFP00787	Light green	M20	20,0	18,0	25,4	9,9	18,0	100
UFP00866	Grey	M22	22,0	20,0	25,4	12,0	18,3	100
UFP00945	Clear	M24	24,0	22,0	25,4	14,2	19,9	100
UFP01024	Black	M26	26,0	24,0	25,4	15,0	18,0	100
UFP01102	Dark green	M28	28,0	26,0	25,4	17,1	18,6	100
UFP02000	Clear	M50-M54	50,5	45,0	25,4	33,5	20,4	100

Silicone Flange Plug

315°



Powder Coating, E-Coating, anodizing and plating. To mask a hole and the chamfer. Reusable.



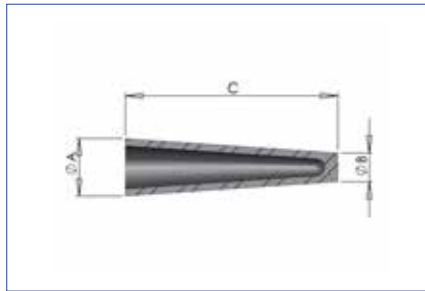
Part number	Color	A (mm)	B (mm)	C (mm)	D (mm)	E (mm)	Units/bag
SFP-M8	Yellow	7,4	12,0	4,5	42	14,0	250
SFP-M10	Pink	8,7	14,7	6,6	47	15,8	250
SFP-M12	Clear	10,7	15,8	8,0	51	15,8	250
SFP-M14	Grey	13,7	18,0	10,2	64	16,8	250

Conical Plug Silicone Hollow

315°



Powder Coating, E-Coating, anodizing and plating. To mask through holes. One mask is suitable for many different diameters. Reusable.



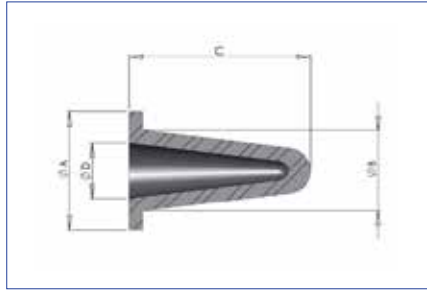
Part number	Color	A (mm)	B (mm)	C (mm)	Units/bag
UHCP-1	Rusty	14,7	3,7	48,3	250
UHCP-2	Blue	20,0	10,0	73,7	100

Silicone Hollow Washer Cone Plug

315°



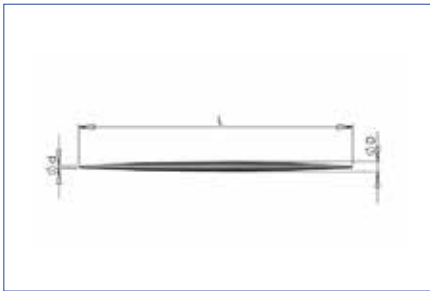
Powder Coating, E-Coating, anodizing and plating. To mask the circular area around a hole. Reusable.



Part number	Color	A (mm)	B (mm)	C (mm)	D (mm)	Units/bag
HWP-0330	Clear	12,5	6,5	23	3,3	200
HWP-0450	Black	16,0	8,5	25	4,5	200
HWP-0500	Yellow	16,5	10,0	28	5,0	200
HWP-0800	Dark blue	19,0	14,2	36	8,0	200
HWP-1150	Purple	25,0	17,5	38	11 ,5	200
HWP-1480	Grey	25,4	20,8	49	14,8	100

Silicone Stick Plug

315°



Powder Coating, E-Coating, anodizing and plating. To mask small through holes. Reusable.

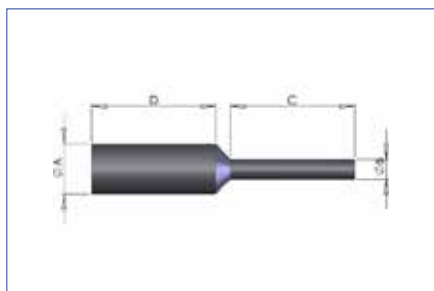
Part number	Color	D (mm)	d (mm)	L (mm)	Units/bag
MT-0079	Clear	2,0	0,6	33,8	1.000
MT-0080	Clear	2,0	0,6	52,8	1.000
MT-0083	Clear	2,1	0,8	49,0	1.000
MT-0100	Clear	2,5	0,8	52,8	1.000
MT-0125	Clear	3,2	0,6	50,8	1.000

Silicone Pull Plug

315°

Powder Coating, E-Coating, anodizing and plating. To mask through holes.
Reusable.

1/3



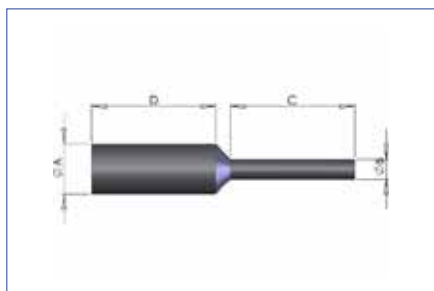
Part number	Metric	A (mm)	B (mm)	C (mm)	D (mm)	Units/bag
SPP-0035-0750	–	0,9	0,6	19,1	19,1	1.000
SPP-0042-0500	–	1,1	0,6	12,7	12,7	1.000
SPP-0050-0500	–	1,3	0,6	12,7	12,7	1.000
SPP06	–	1,6	1,2	8,6	9,5	1.000
SPP-0062-0500	–	1,6	1,0	12,7	12,7	1.000
SPP-0068-0500	–	1,7	1,0	12,7	12,7	1.000
SPP07	–	1,7	1,2	15,5	15,9	500
SPP08	–	1,9	1,2	15,0	15,5	500
SPP-0080-1000	–	2,0	1,0	25,4	25,4	1.000
SPP09	–	2,3	1,3	15,9	15,9	500
SPP-0093-1000	–	2,4	1,6	25,4	25,4	1.000
SPP11	M3	2,6	1,6	15,9	13,3	500
SPP-0109-1000	–	2,8	1,6	25,4	25,4	1.000
SPP-0120-1000	–	3,1	2,0	25,4	25,4	1.000
SPP11A	–	3,2	1,6	15,9	15,9	500
SPP14	–	3,3	2,4	25,4	25,4	500
SPP15	–	3,3	2,4	17,8	16,5	500
SPP-0130-1000	–	3,3	2,0	25,4	25,4	1.000
SPP17	M4	3,6	2,2	14,2	15,9	500
SPP-0145-1250	–	3,7	2,4	31,8	31,8	1.000
SPP18	–	3,9	2,1	15,9	16,1	500
SPP20	–	4,0	1,6	19,1	15,9	500
SPP-0157-1250	–	4,0	2,4	31,8	31,8	1.000
SPP22	–	4,1	2,4	14,8	15,9	500
SPP-0175-1250	M5	4,5	2,4	31,8	31,8	1.000
SPP-0190-1250	M5	4,8	3,2	31,8	31,8	1.000
SPP23	M5	5,0	2,8	15,9	15,9	500
SPP30	M6	5,5	3,3	25,4	25,4	500
SPP-0218-1250	M6	5,5	3,2	31,8	31,8	1.000
SPP33	M6	5,7	3,2	25,4	25,4	500
SPP-0235-1250	M6	6,0	3,2	31,8	31,8	1.000
SPP-0250-1250	Ø6	6,4	3,2	31,8	31,8	1.000
SPP37	Ø6	6,5	3,3	25,4	25,4	500
SPP-0265-1250	M8	6,7	3,2	31,8	31,8	1.000
SPP40	M8	7,0	3,2	23,4	23,6	500

Silicone Pull Plug

315°

2/3

Powder Coating, E-Coating, anodizing and plating. To mask through holes. Reusable.

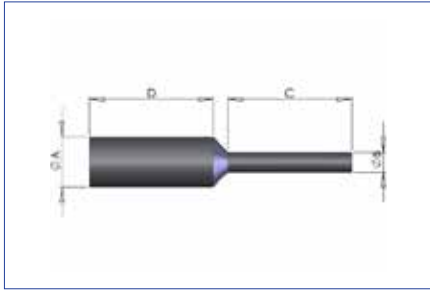


Part number	Metric	A (mm)	B (mm)	C (mm)	D (mm)	Units/bag
SPP40LS	M8	7,0	3,7	50,8	50,8	500
SPP-0281-1250	M8	7,1	3,2	31,8	31,8	1.000
SPP-0312-1250	M8	7,9	4,8	31,8	31,8	500
SPP42	Ø8	8,0	3,9	23,1	25,4	500
SPP42A	Ø8	8,5	6,4	27,9	19,2	500
SPP43	Ø8	8,5	3,9	25,4	25,4	500
SPP50	M10	8,9	4,9	23,5	22,4	500
SPP-0350-1250	M10	8,9	4,8	31,8	31,8	500
SPP-0375-1250	M10	9,5	4,8	31,8	31,8	500
SPP55	Ø9	9,8	3,9	25,4	25,4	500
SPP-0405-1250	–	10,3	6,4	31,8	31,8	500
SPP60	M12	10,4	4,9	25,4	25,4	500
SPP63	M12	10,6	4,1	25,4	25,4	500
SPP-0437-1250	–	11,1	6,4	31,8	31,8	500
SPP445	–	11,3	6,5	25,4	25,4	500
SPP70	–	11 ,9	6,4	25,4	25,4	500
SPP-0470-1250	–	11 ,9	6,4	31,8	31,8	500
SPP73	–	12,0	6,2	25,4	25,4	500
SPP-0500-1250	M14	12,7	6,4	31,8	31,8	500
SPP77	–	13,0	6,5	24,3	25,4	500
SPP-0516-1250	–	13,1	6,4	31,8	31,8	500
SPP80	–	13,5	6,4	25,4	25,4	500
SPP-0530-1250	–	13,5	6,4	31,8	31,8	200
SPP85	M16	14,5	7,7	25,4	25,4	500
SPP89	–	15,5	6,4	25,4	25,4	500
SPP-0612-1500	–	15,5	6,4	38,1	38,1	200
SPP90	–	16,3	9,5	25,4	25,4	100
SPP-0641-1500	M18	16,3	6,4	38,1	38,1	200
SPP-0700-1500	M20	17,8	6,4	38,1	38,1	200
SPP95LS	–	18,0	9,5	50,8	50,8	100
SPP100	–	19,6	9,5	23,6	25,4	100
SPP-0770-1500	–	19,6	6,4	38,1	38,1	100
SPP105	–	20,5	10,9	31,8	31,8	100
SPP-0812-1500	–	20,6	6,4	38,1	38,1	200
SPP110	–	22,6	9,5	25,4	25,4	100

Silicone Pull Plug

315°

3/3



Powder Coating, E-Coating, anodizing and plating. To mask through holes. Reusable.

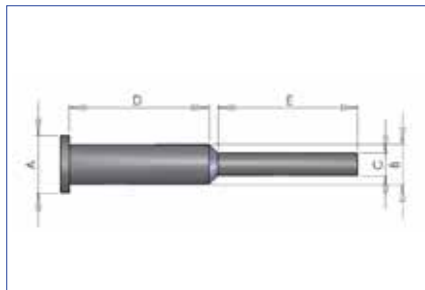
Part number	Metric	A (mm)	B (mm)	C (mm)	D (mm)	Units/bag
SPP-0896-1500	–	22,8	6,4	38,1	38,1	200
SPP120	–	25,9	9,5	24,6	25,4	100
SPP-1020-1500	–	25,9	6,4	38,1	38,1	200
SPP140	–	35,1	18,6	38,1	38,1	100

Silicone Weld-Nut Pull Plug

315°



Powder Coating, E-Coating, anodizing and plating. To mask through holes and the chamfer. Reusable. To be fit by pulling.

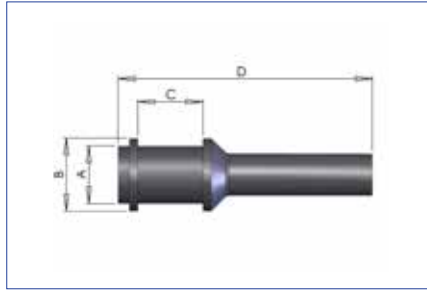


Part number	Color	Metric	A (mm)	B (mm)	C (mm)	D (mm)	E (mm)	Units/bag
WP175	Red	M5	7,1	4,5	3,1	25,4	25,4	500
WP218	Blue	M6	8,7	5,6	3,1	25,4	25,4	500
WP281	Yellow	M8	10,4	7,1	4,1	25,4	25,4	500
WP335	Orange	M10	11,7	8,6	4,1	25,4	25,4	500
WP350	Red	M10	11,7	8,9	4,1	25,4	25,4	500
WP437	Purple	M12	14,0	11,2	6,1	25,4	25,4	250
WP516	Green	–	16,0	13,2	6,6	25,4	25,4	250

Silicone Double Flange Pull Plug

315°

Powder Coating, E-Coating, anodizing and plating. Reusable. To be fit by pulling. To mask the both chambers of a through hole.

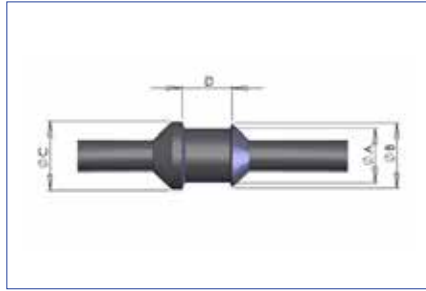


Part number	Color	Suitable for	A (mm)	B (mm)	C (mm)	D (mm)	Units/bag
DFPP-M6	Dark green	Ø6	5,0	7,8	6,2	33	1.000
DFPP-M8	Rusty	Ø8	6,7	9,5	7,9	34	1.000
DFPP-M10	Green	Ø9	8,5	11 ,3	9,0	35	500
DFPP-M12	Purple	Ø10	10,3	13,0	11 ,6	45	250
DFPP-M16	White	Ø14	13,5	17,0	14,0	50	250
DFPP-M20	Dark blue	Ø18	17,0	21,0	18,0	58	100

Silicone Leading Pull Plug

315°

Powder Coating, E-Coating, anodizing and plating. To mask the first and the last thread or the chamfers (one or both chamfers). Pull plug fitting system.

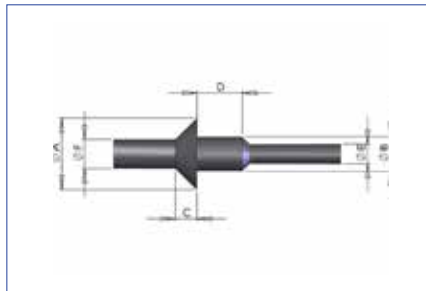


Part number	Suitable for A (mm)	B (mm)	C (mm)	D (mm)	E (mm)	Units/bag	
LT200-M4	M4	4,1	5,1	7,0	7,1	40,4	500
LT200-M6	Ø6	5,6	6,6	8,6	7,6	47,8	500
LT200-M8	M8	7,1	8,6	10,2	8,4	52,1	250
LT200-M10	Ø10	9,1	11,2	12,2	9,7	48,8	250
LT200-M12	Ø 11	10,7	12,7	13,7	11,2	54,1	100
LT200-M16	Ø15	14,2	17,3	17,3	14,7	59,2	100

Silicone Washer Pull Plug

315°

Powder Coating, E-Coating, anodizing and plating. To mask through holes and the surrounding washer. Reusable.



Part number	Color	A (mm)	B (mm)	C (mm)	D (mm)	E (mm)	F (mm)	Units/bag
UWPP-M3	Dark blue	10,0	2,7	2,7	9,9	1,5	2,3	250
UWPP-M4	Dark green	10,0	3,6	2,7	9,9	2,0	3,1	250
UWPP-M5	Clear	10,0	4,5	2,7	9,9	2,5	3,8	250
UWPP-500	Pink	12,7	4,2	2,7	9,9	2,4	3,6	250
UWPP-562	Yellow	14,3	4,9	2,7	9,9	2,8	4,1	250
UWPP-M6	White	15,0	5,4	4,2	9,9	3,1	4,6	250
UWPP-625	Green	15,9	5,7	2,7	9,9	3,3	4,8	250
UWPP-M8	Grey	15,0	7,2	4,2	9,9	4,1	6,1	250
UWPP-688	Clear	17,5	7,2	4,2	9,9	4,1	6,1	250
UWPP-M12	Pink	20,0	10,9	5,3	9,9	6,2	9,1	100
UWPP-922	White	23,4	10,2	5,3	9,9	5,8	8,6	100
UWPP-1060	Dark blue	26,9	11,7	5,3	9,9	6,7	9,9	100

Green Polyester Tape 218

218°

Powder Coating, Anodizing, E-Coating, Photo splicing.
No residue after removing. Customized width from 5mm to 1000 mm. High temperature resistance.



Tapes & Discs

Part number	Wide (mm)	Length (m/roll)	m ² /roll	Rolls / full box
GPT10MM	10	66	0,7	126
GPT12MM	12	66	0,8	99
GPT15MM	15	66	1,0	81
GPT20MM	20	66	1,3	63
GPT25MM	25	66	1,7	54
GPT30MM	30	66	2,0	45
GPT35MM	35	66	2,3	36
GPT38MM	38	66	2,5	36
GPT40MM	40	66	2,6	36
GPT45MM	45	66	3,0	27
GPT50MM	50	66	3,3	27
GPT60MM	60	66	4,0	18
GPT70MM	70	66	4,6	18
GPT80MM	80	66	5,3	18
GPT100MM 100		66	6,6	9
GPT200MM 200		66	13,2	9

Green Polyester Tape 204

204°

Powder Coating, Anodizing, E-Coating, Photo splicing.
No residue after removing. Customized width from 5 mm to 1.000 mm.



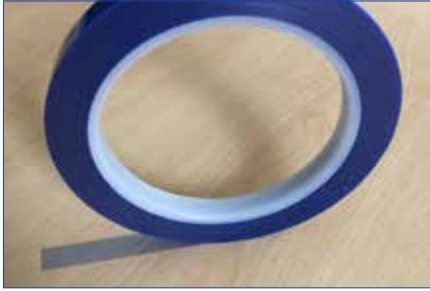
Tapes & Discs

Part number	Wide (mm)	Length (m/roll)	m ² /roll
PT204-10MM	10	66	0,7
PT204-12MM	12	66	0,8
PT204-15MM	15	66	1,0
PT204-20MM	20	66	1,3
PT204-25MM	25	66	1,7
PT204-30MM	30	66	2,0
PT204-35MM	35	66	2,3
PT204-38MM	38	66	2,5
PT204-40MM	40	66	2,6
PT204-45MM	45	66	3,0
PT204-50MM	50	66	3,3
PT204-60MM	60	66	4,0
PT204-70MM	70	66	4,6
PT204-80MM	80	66	5,3
PT204-100MM	100	66	6,6
PT204-200MM	200	66	13,2

Blue Polyester Tape

204°

Powder Coating, Anodizing, E-Coating, Photosplicing.
Extra FLEXIBLE tape. No residue after removing.
Customized width from 5 mm to 500 mm.



Part number	Wide (mm)	Length (m/roll)	m ² /roll
BPT10MM	10	66	0,7
BPT12MM	12	66	0,8
BPT15MM	15	66	1,0
BPT20MM	20	66	1,3
BPT25MM	25	66	1,7
BPT30MM	30	66	2,0
BPT35MM	35	66	2,3
BPT40MM	40	66	2,6
BPT45MM	45	66	3,0
BPT50MM	50	66	3,3
BPT60MM	60	66	4,0
BPT80MM	80	66	5,3
BPT100MM	100	66	6,6

Polyimide Tape

260°

High temperature Powder Coating, SMT. Insulation
Grade H. High dielectric Strength. No residue after
removing. Customized width from 5 mm to 500 mm.



Part number	Wide (mm)	Length (m/roll)	m ² /roll
KPT10MM	10	33	0,3
KPT15MM	15	33	0,5
KPT20MM	20	33	0,7
KPT25MM	25	33	0,8
KPT30MM	30	33	1,0
KPT35MM	35	33	1,2
KPT40MM	40	33	1,3
KPT45MM	45	33	1,5
KPT50MM	50	33	1,7
KPT55MM	55	33	1,8
KPT60MM	60	33	2,0
KPT70MM	70	33	2,3
KPT80MM	80	33	2,6

Glass Cloth Tape

280°

Powder Coating, Electrical Insulation, Wire wrapping, sand blasting, shot blasting, grit basting, plasma spray, thermal spray, thermal insulation gaskets. Insulation grade H.



Tapes & Discs

Part number	Wide (mm)	Length (m/roll)	m ² /roll
GLT10MM	10	33	0,3
GLT15MM	15	33	0,5
GLT20MM	20	33	0,7
GLT25MM	25	33	0,8
GLT30MM	30	33	1,0
GLT35MM	35	33	1,2
GLT40MM	40	33	1,3
GLT45MM	45	33	1,5
GLT50MM	50	33	1,7
GLT55MM	55	33	1,8
GLT60MM	60	33	2,0
GLT70MM	70	33	2,3
GLT80MM	80	33	2,6

Crepe Paper Discs

280°

Recommended for low powder paint temperature and liquid spray applications. High quality and high heat resistance. Custom sizes and designs available.



Tapes & Discs

Part number	Diameter (mm)	Discs per roll
CD005MM	5	5000
CD06MM	9	5000
CD09.5MM	9.5	5000
CD010MM	10	5000
CD012MM	12	5000
CD015MM	15	5000
CD020MM	20	5000
CD025MM	25	2000
CD030MM	30	2000
CD040MM	40	2000
CD050MM	50	500
CD080MM	80	500
CD100MM	100	500

Green Polyester Discs

280°

Powder Coating, Electrical Insulation, Wire wrapping, sand blasting, shot blasting, grit basting, plasma spray, thermal spray, thermal insulation gaskets. Insulation grade H.



Tapes & Discs

Part number	Diameter (mm)	Discs per roll
GPD005MM	5	2.000
GPD006MM	6	2.000
GPD007MM	7	2.000
GPD008MM	8	2.000
GPD009MM	9	2.000
GPD010MM	10	2.000
GPD012MM	12	2.000
GPD012,7MM	12,7	2.000
GPD015MM	15	2.000
GPD018MM	18	2.000
GPD019MM	19	2.000
GPD020MM	20	1.000
GPD022MM	22	1.000
GPD025MM	25	500

Part number	Diameter (mm)	Discs per roll
GPD030MM	30	500
GPD035MM	35	500
GPD040MM	40	500
GPD045MM	45	250
GPD046MM	46	250
GPD050MM	50	250
GPD055MM	55	100
GPD060MM	60	100
GPD065MM	65	100
GPD070MM	70	100
GPD075MM	75	100
GPD080MM	80	100
GPD085MM	85	100
GPD090MM	90	100

* Ask for customized shapes.

Lead Foil Disc

135°

For Cadmium, Nickel or Chrome plating.
Chemical treatments. Acid resistant.
Conductive material.



Lead Foil Tape

135°

For Cadmium, Nickel or Chrome plating. Chemical
treatments. Acid resistant. It is a conductive material.
Customized size from 25 mm to 500 mm.



Part number	Diameter (mm)	Discs per roll
-------------	---------------	----------------

LFD008MM	8	2.000
LFD010MM	10	2.000
LFD011MM	11	2.000
LFD012MM	12	2.000
LFD013MM	13	2.000
LFD014MM	14	2.000
LFD015MM	15	2.000
LFD016MM	16	2.000
LFD017MM	17	1.000
LFD018MM	18	1.000
LFD019MM	19	1.000
LFD020MM	20	1.000
LFD022MM	22	500
LFD023MM	23	500
LFD025MM	25	500
LFD027MM	27	500
LFD028MM	28	500
LFD029MM	29	500
LFD030MM	30	500
LFD032MM	32	500
LFD039MM	39	250
LFD040MM	40	250
LFD050MM	50	250
LFD052MM	52	250
LFD055MM	55	250
LFD058MM	58	250

Part number	Wide (mm)	Length (m/roll)	m ² /roll
-------------	-----------	-----------------	----------------------

LFTAPE-25MM	25	33	0,8
LFTAPE-30MM	30	33	1,0
LFTAPE-35MM	35	33	1,2
LFTAPE-40MM	40	33	1,3
LFTAPE-45MM	45	33	1,5
LFTAPE-50MM	50	33	1,7
LFTAPE-55MM	55	33	1,8
LFTAPE-60MM	60	33	2,0
LFTAPE-65MM	65	33	2,1
LFTAPE-70MM	70	33	2,3
LFTAPE-75MM	75	33	2,5
LFTAPE-80MM	80	33	2,6
LFTAPE-85MM	85	33	2,8
LFTAPE-90MM	90	33	3,0
LFTAPE-95MM	95	33	3,1
LFTAPE-100MM	100	33	3,3

Silicone Tube

315°

Powder Coating, E-Coating.
Hard wall. Reusable.

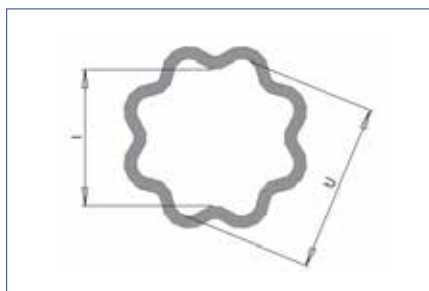


Part number	Metric	ID (mm)	OD (mm)	Length (m/roll)
ST0040-C4SIL	-	1,0	4,1	30
ST0062-C4SIL	-	1,6	4,6	30
ST0080-C4SIL	-	2,0	5,1	30
ST0106-C4SIL	M3	2,7	5,7	30
ST0125-C4SIL	-	3,2	6,2	30
ST0140-C4SIL	M4	3,6	6,6	30
ST0156-C4SIL	-	4,0	7,0	30
ST0172-C4SIL	-	4,4	7,4	30
ST0187-C4SIL	M5	4,8	7,8	30
ST0203-C4SIL	-	5,2	8,2	30
ST0218-C4SIL	-	5,5	8,6	30
ST0234-C4SIL	M6	5,9	9,0	30
ST0250-C4SIL	-	6,4	9,4	30
ST0281-C4SIL	-	7,1	10,2	30
ST0312-C4SIL	M8	7,9	11,0	30
ST0343-C4SIL	-	8,7	11,8	30
ST0375-C4SIL	M10	9,5	12,6	30
ST0406-C4SIL	-	10,3	13,4	30
ST0437-R4SIL	-	11,1	14,2	30
ST0456-R4SIL	M12	11,6	14,7	30
ST0500-R4SIL	-	12,7	15,8	30
ST0535-R4SIL	M14	13,6	16,6	30
ST0625-R4SIL	M16	15,9	18,9	15
ST0750-R4SIL	M20	19,1	22,1	15
ST0875-R4SIL	-	22,2	25,3	15
ST0937-R4SIL	M24	23,8	26,9	15
ST1000-R4SIL	-	25,4	28,5	15
ST1125-R4SIL	-	28,6	31,6	15
ST1250-R4SIL	-	31,8	34,8	15
ST1375-R4SIL	-	34,9	38,0	15
ST1500-R4SIL	-	38,1	41,2	15
ST1625-R4SIL	-	41,3	44,3	15
ST1750-R4SIL	-	44,5	47,5	15
ST1875-R4SIL	-	47,6	50,7	15
ST2000-R4SIL	-	50,8	53,9	15

Silicone Star Tube

315°

Powder Coating, E-Coating. Flexible inner diameter. Easy to put and remove. Reusable.



Part number	Color	I (mm)	U (mm)	Length (m/roll)	Hose (mm)
SST0305	Red	3,0	5,0	25	6,5
SST0507	Yellow	5,0	7,0	25	9,0
SST0709	White	7,0	9,0	25	11,0
SST0911	Blue	9,0	11,0	25	13,0
S S T 1113	Green	11,0	13,5	25	15,5
SST1317	Red	13,5	17,5	25	18,0
SST1722	White	17,5	22,0	25	21,0
SST2328	Brown	23,0	28,0	10	29,0
SST2935	Grey	29,0	35,0	5	36,5
SST3645	Black	36,0	45,0	5	44,0

Foam Silicone Cord

250°

Powder Coating, E-Coating. Silicone sponge cord.
Very flexible and usable for different close dimensions.
Easy to fit and adapt to the groove to mask.



Tubes & Sheets

Part number	Diameter (mm)	Length (m/roll)
FOAMC-0093	2,4	30,5
FOAMC-0125	3,2	15,2
FOAMC-0156	4,0	15,2
FOAMC-0187	4,8	15,2
FOAMC-0250	6,4	15,2
FOAMC-0275	7,0	15,2
FOAMC-0312	7,9	15,2
FOAMC-0375	9,5	15,2
FOAMC-0437	11,1	15,2
FOAMC-0465	11,8	7,6
FOAMC-0500	12,7	7,6
FOAMC-0562	14,3	7,6
FOAMC-0625	15,9	7,6
FOAMC-0687	17,5	7,6
FOAMC-0750	19,1	7,6
FOAMC-0813	20,7	7,6
FOAMC-0875	22,2	7,6
FOAMC-0937	23,8	7,6
FOAMC-1000	25,4	7,6
FOAMC-1250	31,8	7,6
FOAMC-1500	38,1	7,6
FOAMC-1750	44,5	7,6
FOAMC-2000	50,8	7,6

Silicone Cord

315°

Powder Coating, E-Coating. Silicone solid cord to mask grooves. Reusable.



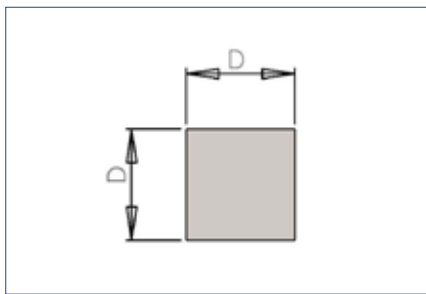
Tubes & Sheets

Part number	Diameter (mm)	Length (m/roll)
SCORD-0093	2,4	30,5
SCORD-0125	3,2	15,2
SCORD-0156	4,0	15,2
SCORD-0167	4,3	15,2
SCORD-0187	4,7	15,2
SCORD-0250	6,4	15,2
SCORD-0275	7,0	15,2
SCORD-0312	7,9	15,2
SCORD-0375	9,5	15,2
SCORD-0437	11,1	15,2
SCORD-0465	11,8	7,6
SCORD-0500	12,7	7,6
SCORD-0562	14,3	7,6
SCORD-0625	15,9	7,6
SCORD-0687	17,4	7,6
SCORD-0750	19,1	7,6
SCORD-0813	20,7	7,6
SCORD-0875	22,2	7,6
SCORD-0937	23,8	7,6
SCORD-1000	25,4	7,6
SCORD-1250	31,8	7,6
SCORD-1500	38,1	7,6
SCORD-1750	44,5	7,6
SCORD-2000	50,8	7,6

Square Silicone Foam Profile

250°

Powder Coating, E-Coating. Silicone sponge profile. Very flexible and usable for different close dimensions.

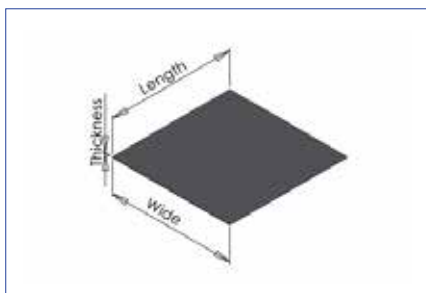


Part number	Length (m/roll)	Dimensions D x D (mm)
FSP-10x10	25	10 x 10
FSP-12x12	25	12 x 12
FSP-20x20	25	20 x 20

Silicone Sheet

250°

Normally used to produce gaskets and joints. Also served as a plain material sheet. Customized shapes available.



Part number	Wide (m)	Thickness (mm)	Minimum order size
SS10	1	1,0	1 m x 1 m
SS15	1	1,5	1 m x 1 m
SS20	1	2,0	1 m x 1 m
SS25	1	2,5	1 m x 1 m
SS30	1	3,0	1 m x 1 m
SS35	1	3,5	1 m x 1 m
SS40	1	4,0	1 m x 1 m
SS50	1	5,0	1 m x 1 m
SS60	1	6,0	1 m x 1 m
SS80	1	8,0	1 m x 1 m
SS100	1	10,0	1 m x 1 m



Pexa Ltd
Burrwood Way
Holywell Green
West Yorkshire
HX4 9BH
United Kingdom
T. +44 (0)1422 314400
F. +44 (0)1422 314401
E. info@pexa.com
www.pexa.com

Pexa Ltd
CS 30136
ZI des Ebisoires
15 Rue des Frères Lumière
78374 PLAISIR CEDEX
France
T. +33 (0) 4 82 62 64 21
F. +33 (0) 4 82 62 64 23
E. info@pexa.com
www.pexa.com